



Christopher Clarke Antiques

Dealers in Campaign Furniture
& Travel Items

Arctic Candle Lamp

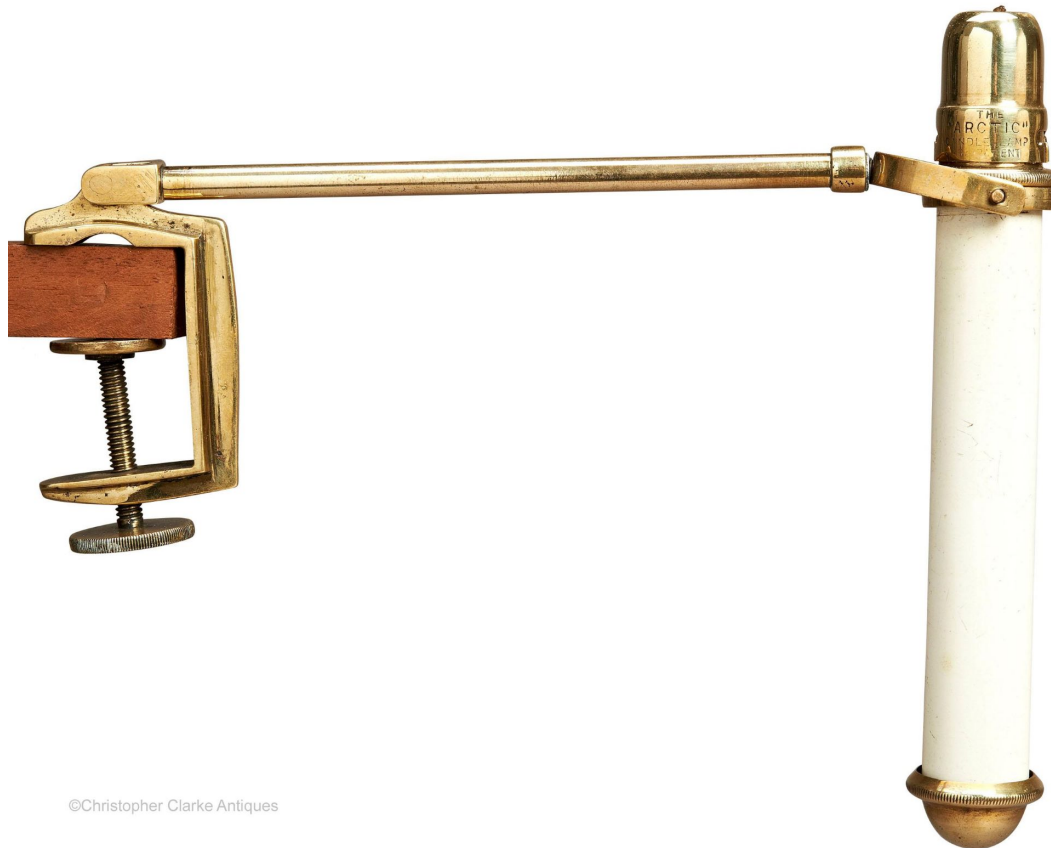
REF:- 82038

Height: 19.5 cm (7 3/4")

Width: 4.5 cm (1 3/4")

Depth: 25.5 cm (10")

SOLD



©Christopher Clarke Antiques

Christopher Clarke Antiques Sheep Street Stow on the Wold Gloucestershire GL54 1JS England
+ 44 (0)1451 830476

<https://campaignfurniture.com/arctic-candle-lamp>

30/07/2021

Short Description

A brass Green's Patent Arctic Candle Lamp on gimballed bracket arm.

Green's described their lamp in the A&N CSL catalogue as '... constructed on the same principal as a carriage or reading lamp, in which the candle, enclosed in a metal tube, is forced up as it burns by means of a spiral spring inside'. The lamp was marketed as preventing shades from catching fire and waste of candle wax. It was also suggested that the lamp could be inserted into any candlestick, with the tube having a white collar to resemble a candle. This version with '...brass bracket to attach to looking glass for shaving &c.' was sold without a shade. A similar version with shade could be used for reading in bed. The gimballed end to the bracket also made it practical for ship board use. Although also sold for domestic use, this Arctic Lamp was clearly very useful for travel be it in a tent or by train and sea. The name also looks to exploit the great interest in Polar exploration in the beginning of the 20th Century. Circa 1900.

Size Incl. Bracket is given.

More Information

Year	Circa 1900
Medium	Brass
Origin	England
Signed	The Arctic Candle Lamp Patent
Exhibitions	Clear The Decks