



# Christopher Clarke Antiques

Dealers in Campaign Furniture  
& Travel Items

## At Ease Gentlemen Catalogue - SOLD OUT

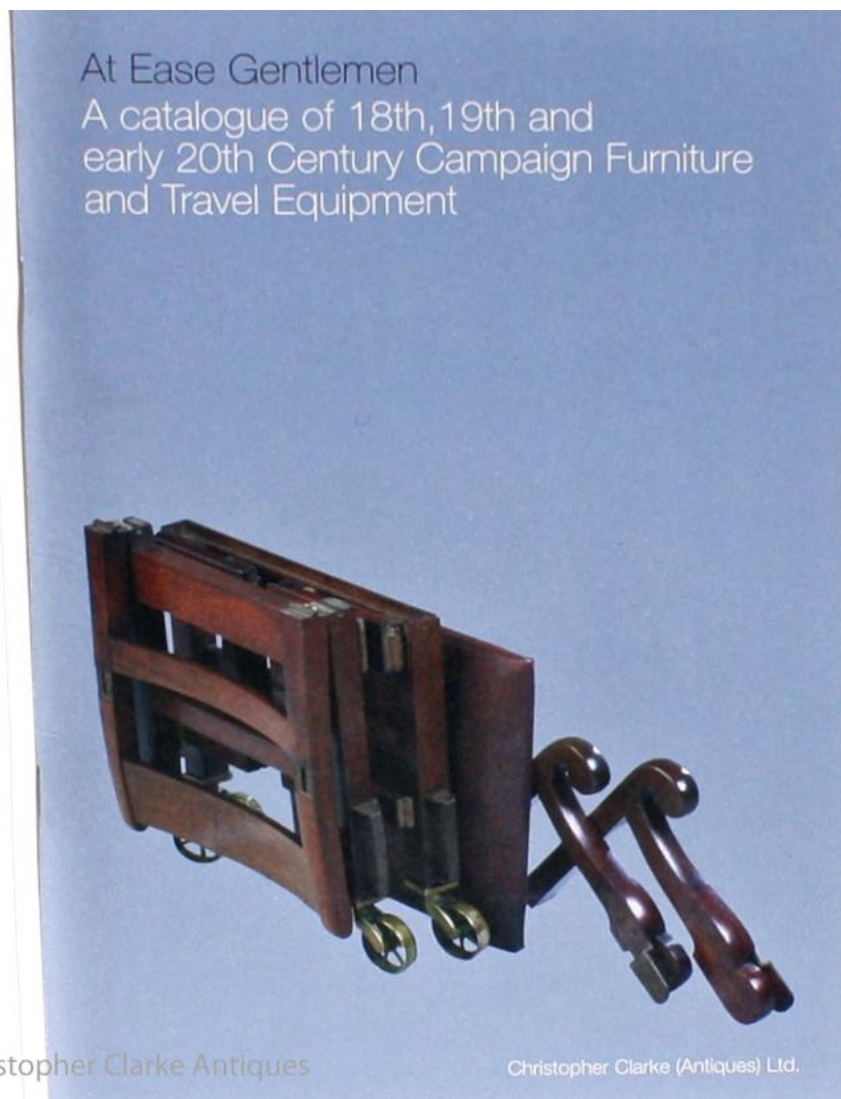
£15

REF:- 81935

Height: 25 cm (9 3/4")

Width: 17.7 cm (6 1/16")

Depth: .4 cm (0 1/4")



Christopher Clarke Antiques Sheep Street Stow on the Wold Gloucestershire GL54 1JS England  
+ 44 (0)1451 830476

## Short Description

---

Our first catalogue, which has now sold out.

At Ease Gentlemen featured an introduction from Nicholas Brawer and several examples of antique campaign furniture that we have not seen since. There is a Bureau on Stand that you might argue is domestic but for the fact that it is stamped Colonel Kemp; there is a good Regency Occasional Table; an Officer's Mess Chair with only one arm so that it can be sat at whilst wearing a sword, a very unusual Bookcase and a Portable Mirror by Ross.

Makers illustrated include Ross & Co., Thomas Lund, Army and Navy CSL, the silversmith Thomas Johnson, Houghton & Gunn, Drew & Sons and Platt. There is also a group of ephemera on the makers Samuel Pratt, John Shepherd, John Pound and Challis' Patent for a folding chair locking system.

## More Information

---

Year	2002
Medium	89 Illustrated Items
Signed	40 Pages incl. Covers
Style	Campaign Furniture Catalogue
Exhibitions	At Ease Gentlemen