



Christopher Clarke Antiques

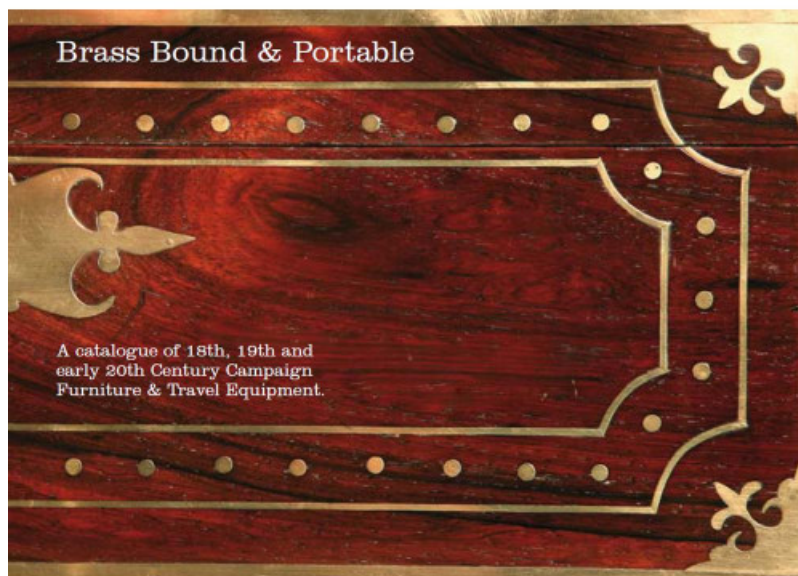
**Dealers in Campaign Furniture
& Travel Items**

Brass Bound And Portable Catalogue

REF: 81945

Height: 17.5 cm (6.9") Width: 24.5 cm (9.6") Depth: 0.35 cm (0.1")

£15



©Christopher Clarke Antiques

J.W. Allen, a company with a long and distinguished history are well represented in this catalogue with an article on the company, various items that they produced and illustrations from an 1878 catalogue of theirs.

The catalogue shows an exceptional Chinese Export Amboyna Campaign Chest with lions paw feet along with 5 other chests of various designs, timbers and makers. There is an unusual Aesthetic Design Easy Chair, a Tripod Stool which is a clever piece of design and a Portable Writing Slope on folding stand. Other highlights include a Campaign Teapoy and some 2 illustrated sheets of signals used by the Highgate Telegraph and Charles Fort in Barbados to recognise vessels. Six different pair of Brighton Bun Travelling Candlesticks are also shown.

The makers represented include the A&N CSL., Ross & Co., Allan Jones, Dollond, Austin of Dublin and Mechi & Bazin.

Christopher Clarke Antiques

The Fosseway, Stow on the Wold, Gloucestershire, GL54 1JS

clarkeltd@btconnect.com • 01451 830 476 • www.campaignfurniture.com