

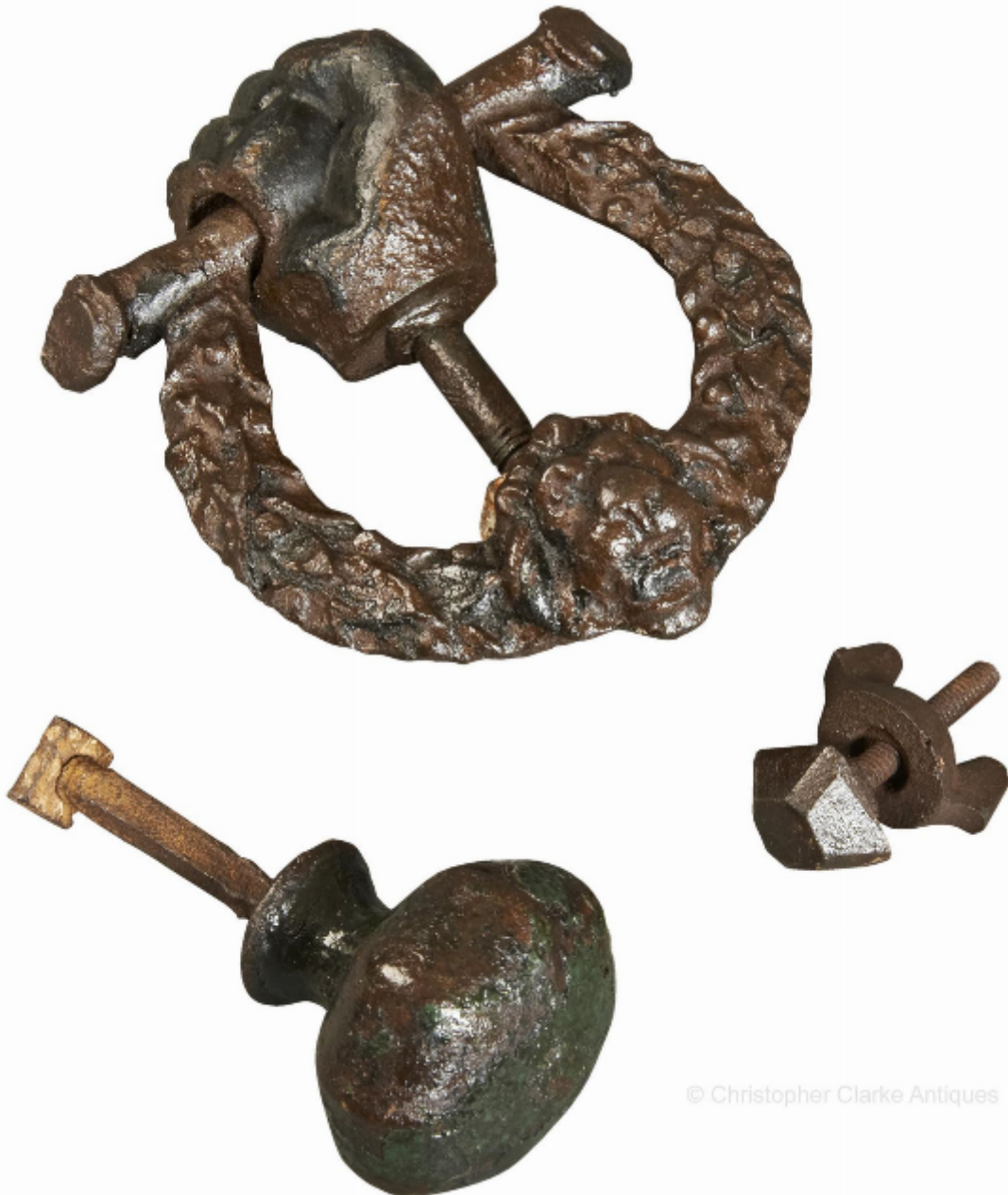


Christopher Clarke Antiques

Dealers in Campaign Furniture  
& Travel Items

Wellington Door Knocker & Door Pull SOLD

Sold



© Christopher Clarke Antiques

REF: 84082

Height: 15.87 cm (6.2")

Width: 13.96 cm (5.5")

Depth: 7.62 cm (3")

## Description

A cast iron Wellington Door Knocker with stud & door pull.

SOLD

David Bray a London ironmonger with a shop at 16 Cranbourn Street, Leicester Square, invented the design in 1814. He capitalised on the Iron Duke's success in the Peninsular Wars and national popularity. The Door Knocker is formed of Wellington's hand holding the baton of a Field Marshall with a victory wreath hanging off it, The bottom of the wreath has a lion to represent British valour in '... overpowering the arms of Tyranny and Usurpation by striking the breast of its bitterest enemy, the French Eagle...'

The design was made after Napoleon was exiled to Elba in April 1814. After Waterloo, the popularity of the knocker increased and again with the Duke's death in September 1852. A number of different maker's probably produced the design and Kenrick is known to illustrate it in their catalogues from the 1840 to 1880. It was an enduring design that allowed the public to associate themselves with a national hero.

The knocker has some pitting to the iron and the remains of paint here and there. It comes with a door stud and a Gothic pattern door pull. Mid 19th Century.

The dimensions of the knocker as it would be fixed to the door are given. That is to say the bolts extending from the hand to pass through the door is not included.