



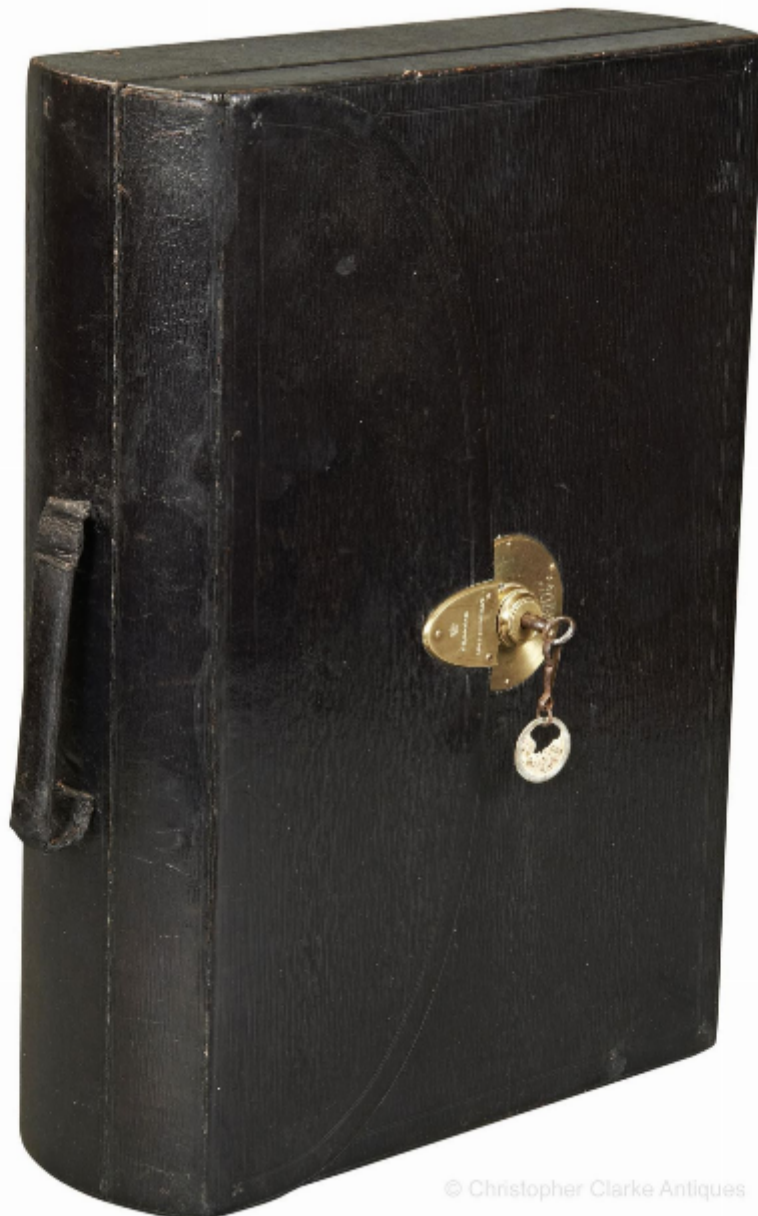
Christopher Clarke Antiques

Dealers in Campaign Furniture
& Travel Items

Portable Desk by Edwards & Asprey

David Edwards

£650



© Christopher Clarke Antiques

REF: 83825

Height: 9.52 cm (3.7")

Width: 36.18 cm (14.2")

Depth: 26.66 cm (10.5")

Description

A black leather on mahogany Portable Desk or Writing Box by Edwards.

The box is made in two halves hinged together so that when opened, one half gives an angled writing slope. The other half has a desk tidy by the hinged edge comprising of a central pen tray flanked to either side by a removable inkwell and a light box. The lift out pen tray has an ebony handle to the middle and covers a well to take further pens etc. The inkwell and light box are made of tin covered in leather and have hinged handles to lift them out, with one a plain square bale and the other shaped to the bale interior to quickly identify one from the other. The inkwell has a sprung lid with a pad to the interior to give a tight seal to the glass bottle. The light box also has a sprung lid with a hinged interior board with an emery sheet for striking the matches that would be contained in the well below. The boxes are stamped in gilt with 'Ink' and 'Light' respectively to the top and 'C. Asprey 166 Bond St. London' to the front.

Behind the desk tidy area is a hinged board that lifts up to reveal an envelope behind it and a green silk lined well for storing papers below. The flap of the envelope is stamped 'Edwards 21 King Street Holborn'. The writing slope board also lifts up to reveal a silk lined well with a removable leather folder for holding papers. Underneath the slope board is an oval paper label noting 'C. Asprey 166 Bond Street' in gilt on black. The box has rounded ends and a flap which fixes to a Bramah lock to close the case. The brass lock plate is stamped 'J Bramah 124 Piccadilly' below a crown. The lock is stamped simply '124 Piccadilly' and engraved with the owner's initials of 'R. M. H.'

This box can be dated to after 1859 when Asprey took over the renowned box makers Edwards. Such was the reputation of Edwards, it made commercial sense to continue to use their name. The quality of this box is very good with the grained leather blind tooled with decorative tram lines to the edges with small Fleur de Lys at their corners. Both a softwood and mahogany is used to the carcass. The carrying handle has been replaced and the leather to the hinge of the flap has started to tear at the edges, which seems typical of this design at a point where it is likely to wear more. The box has its Bramah key. This is a good example of a Victorian Writing Slope that benefits from being associated with two strong names. Circa 1865.

Clicking on either maker's name above will take you to their history