



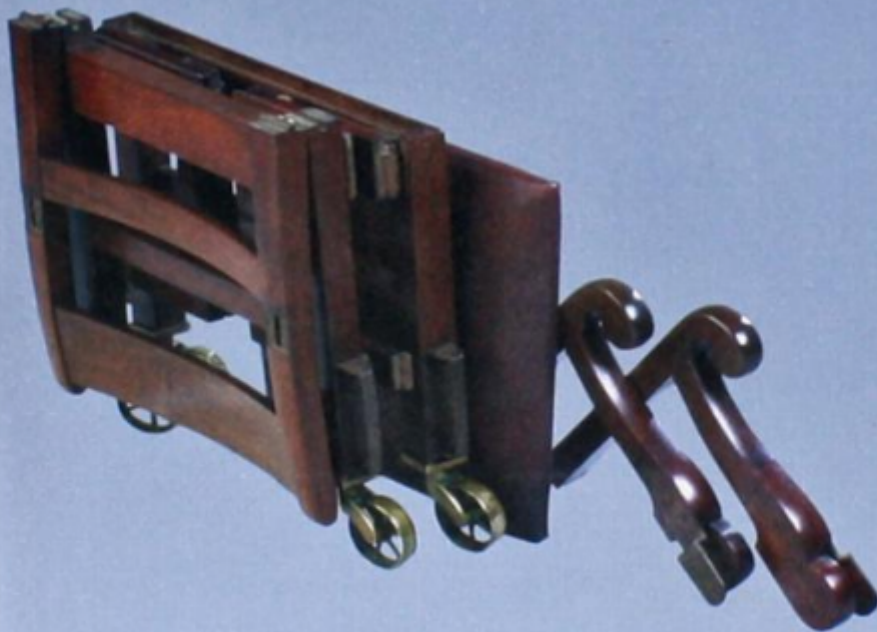
Christopher Clarke Antiques

Dealers in Campaign Furniture
& Travel Items

At Ease Gentlemen Catalogue - SOLD OUT

£15

At Ease Gentlemen
A catalogue of 18th, 19th and
early 20th Century Campaign Furniture
and Travel Equipment



©Christopher Clarke Antiques

Christopher Clarke (Antiques) Ltd.

REF: 81935

Height: 25 cm (9.8")

Width: 17.7 cm (7")

Depth: 0.4 cm (0.2")

Description

Our first catalogue, which has now sold out.

At Ease Gentlemen featured an introduction from Nicholas Brawer and several examples of antique campaign furniture that we have not seen since. There is a Bureau on Stand that you might argue is domestic but for the fact that it is stamped Colonel Kemp; there is a good Regency Occasional Table; an Officer's Mess Chair with only one arm so that it can be sat at whilst wearing a sword, a very unusual Bookcase and a Portable Mirror by Ross.

Makers illustrated include Ross & Co., Thomas Lund, Army and Navy CSL, the silversmith Thomas Johnson, Houghton & Gunn, Drew & Sons and Platt. There is also a group of ephemera on the makers Samuel Pratt, John Shepherd, John Pound and Challis' Patent for a folding chair locking system.