



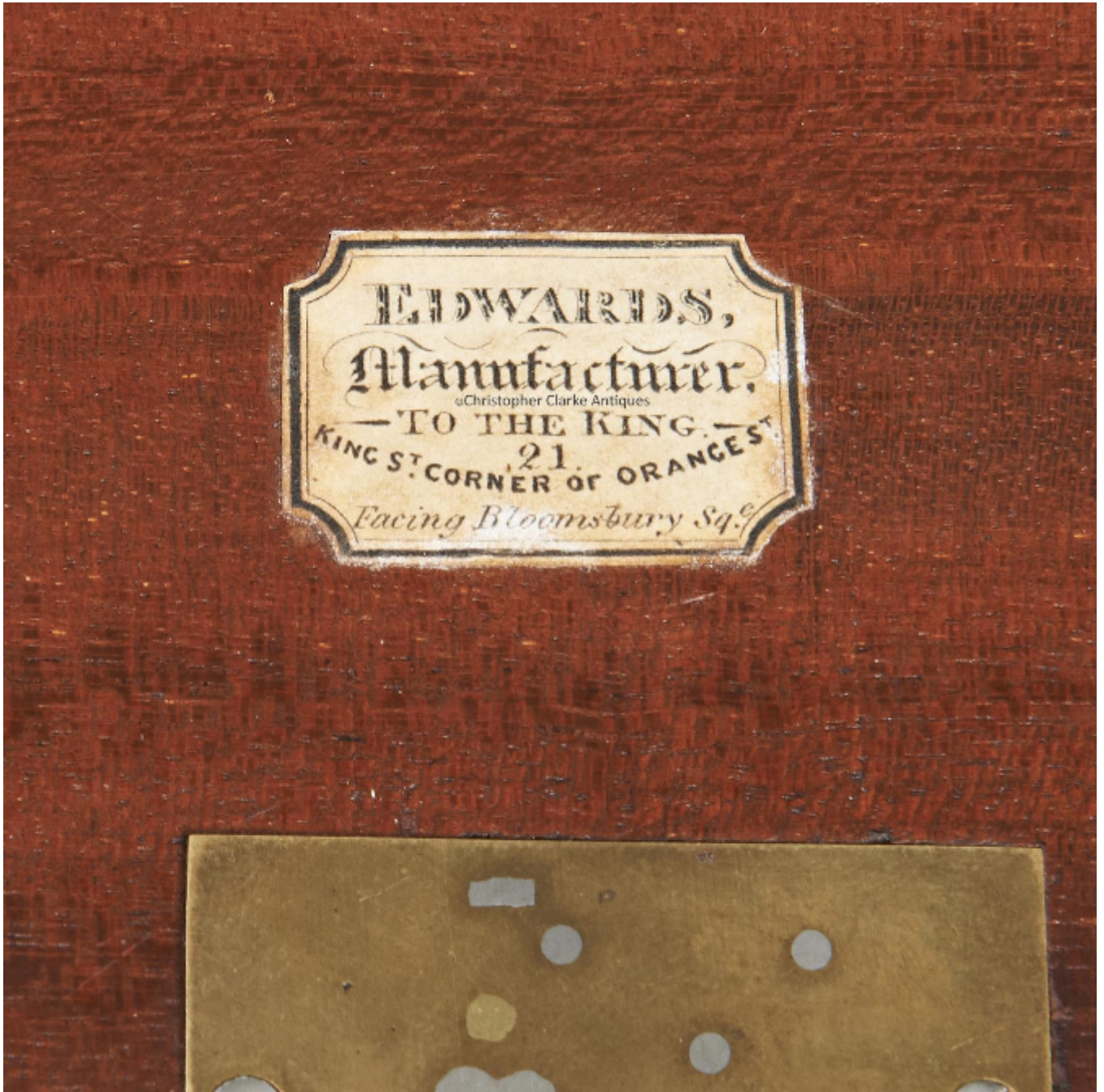
Christopher Clarke Antiques

Dealers in Campaign Furniture  
& Travel Items

## Edwards Writing Slope

David Edwards

Sold



REF: 83325

Height: 13.96 cm (5.5")

Width: 45.7 cm (18")

Depth: 25.39 cm (10")

## Description

A brass edged, coromandel Portable Desk or Writing Slope by Edwards.

The desk has a small paper label to the underside of each writing board simply stating 'Edwards, Manufacturer To The King, 21 King St. Corner Of Orange St. Facing Bloomsbury Sq.e.'

The box is veneered in coromandel on mahogany. The use of brass stringing to decorate the box, not only to the outside but also the interior and the sharp Greek key pattern tooled in gilt to the leather are typical of Edward's work. Even the pen tray has brass stringing. The design of the box is fairly standard for a writing slope except that it doesn't have a side drawer. The facia board to the front of the desk tidy area is released by pressing a hidden catch to the inkwell section. Behind it hide two secret drawers. The standard of the cabinet making is high.

Edwards is one of the most celebrated box makers of the 19th century and the quality of his work shows in this desk. Circa 1830.

Closed size is given.